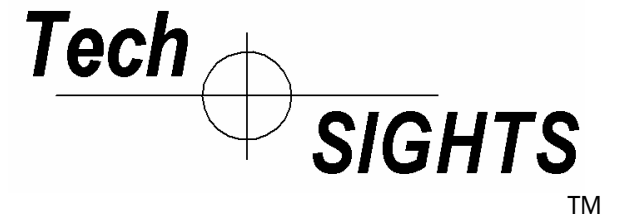
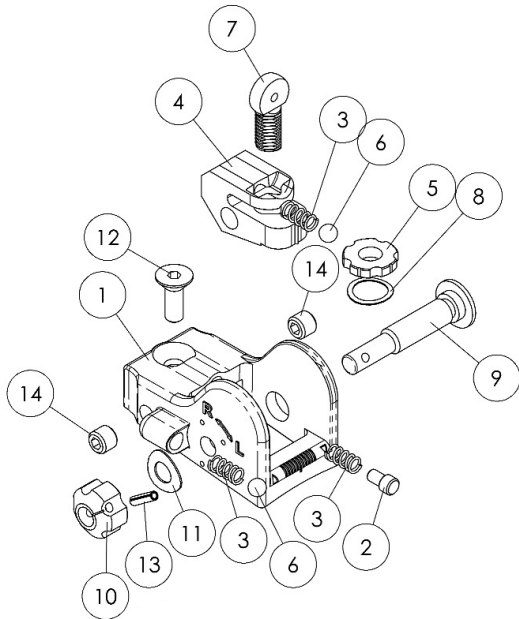


ITEM NO.	PART NUMBER	DESCRIPTION	QTY.	PRICE
1	TS00230	SIGHT BASE	1	\$20.00
2	TS00228	STABILIZER PLUNGER	1	\$ 2.00
3	TS00135	ELEVATION DETENT SPRING	3	\$ 1.00
4	TS00132	ELEVATION BASE	1	\$10.00
5	TS00133	DIAL	1	\$ 5.00
6	TS00136	BALL, .125" DIAMETER CHROME	2	\$ 1.00
7	TS00134	APERTURE - .062 DIA.	1	\$ 8.00
8	TS00131	SPRING WASHER, ELEVATION	1	\$ 2.00
9	TS00107	WINDAGE SCREW, A2	1	\$ 3.00
10	TS00170	KNOB	1	\$ 8.00
11	TS00168	DISC SPRING	1	\$ 2.00
12	RUGER OEM	6-40 x 3/16" SCREW		
13	TS00017	ROLL PIN, 1/16 X 1/4"	1	\$.50
14	TS00232	SOCKET SET SCREW - 8-36 X 1/8"	2	\$ 1.00



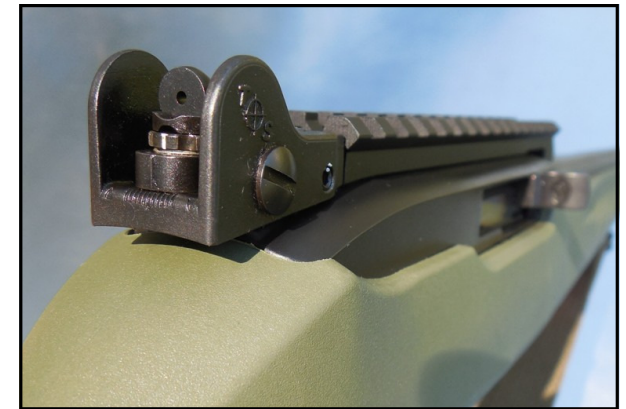
ASSEMBLY INSTRUCTIONS
for the
MINI200C SIGHTS



PRODUCT GUARANTEE

The Tech-SIGHTS MINI200C has been designed to be a quality accessory for your firearm. If any part of the MINI200C should fail due to normal usage or manufacturing defect, we will replace the part(s) at no charge to the customer for a period of one year from the date of purchase.

Although we have made every effort to create a sight that will increase the accuracy of your firearm, we can make no guarantee as to the results each individual will experience using the sight.



Tech-SIGHTS, LLC
Hartsville, SC 29550

Phone: 843-332-8222
Email: sales@Tech-SIGHTS.com
www.Tech-SIGHTS.com

Receiver Mounted Aperture Sights
For the Ruger® 10/22
Collector Series Rifles

Tech SIGHTS™

Assembly Instructions for the MINI200C Sights

1. ALWAYS POINT MUZZLE IN A SAFE DIRECTION.
2. REMOVE THE MAGAZINE.
3. PULL THE BOLT TO THE REAR AND LOCK IN POSITION.
4. CHECK TO SEE THAT THERE ARE NO CARTRIDGES IN THE CHAMBER OR MAGAZINE.
5. Remove the rear sight as shown using a T10 Torx wrench or a 3/32 hex wrench to remove the #6-40 x 3/16" screw.



6. Clean and remove any oil residue from the #6-40 screw and threaded hole. Clean the two small #8-36 set screws and the threaded holes on each side of the MINI200C sight. Apply a small amount of fresh medium strength Loctite to the #6-40 screw threads and the #8-36 set screws.

7. Place MINI200C sight on rail and lightly install the original Ruger #6-40 screw. You will tighten it more later.



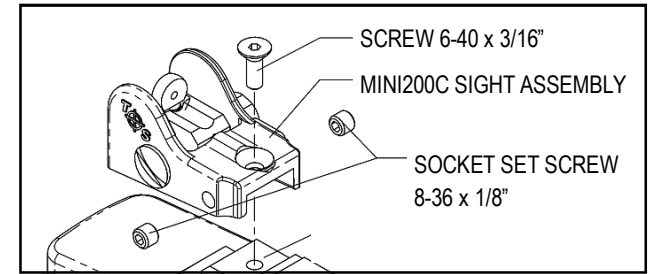
8. Install the #8-36 set screws. Snug them evenly on each side, do not over tighten.



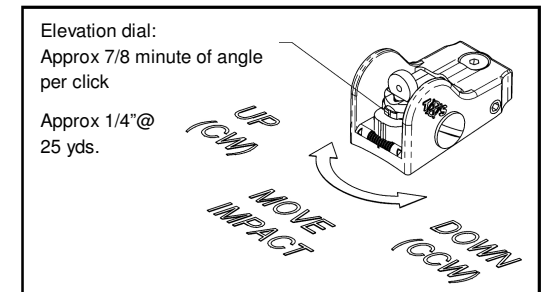
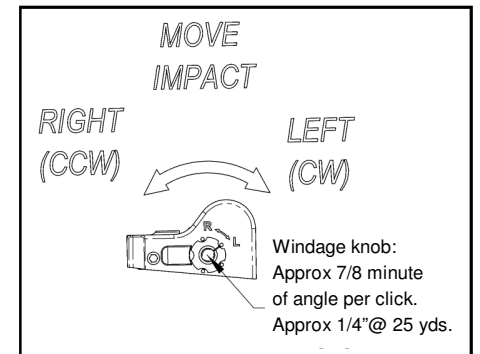
The set screws can be loosened on one side and tightened on the other side to tweak the sight body left or right as needed.



Once the set screws are adjusted, finish tightening the main #6-40 Torx screw but do not over tighten. The Loctite will keep it from loosening.



Sight Adjustments for the MINI200C



Note:

Elevation dial can be adjusted with a pointed object. A sight adjusting tool is available but not required.

Windage can usually be adjusted with your fingers although it is stiff. A coin or screwdriver can be used.