

# Tech <sup>TM</sup> SIGHTS

## Assembly Instructions for the SU16A1 & SU16A1-EL Sights

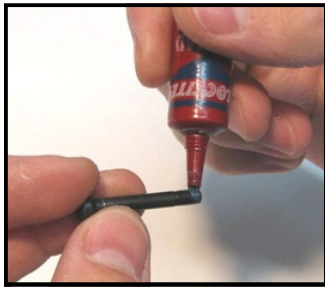
### 1. ALWAYS POINT MUZZLE IN A SAFE DIRECTION.

2. Pull the bolt to the rear and lock in position.

### 3. VERIFY THAT THERE ARE NO CARTRIDGES IN THE CHAMBER OR MAGAZINE WELL AREA.

4. Remove the 8-36 clamping screw (TS00309) from the SU16A1 or SU16A1-EL sight base if it is assembled.

5. Apply a small amount of low or medium strength thread locker to the threaded hole on the sight base (TS00312).



6. Apply a small amount of low or medium strength thread locker to the threads of the 8-36 clamping screw (TS00309).

7. Insert screw through the clamp block (TS00313) and start threading the screw into the sight base a few turns.

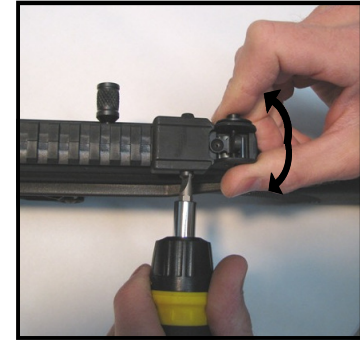
8. With the sight loosely assembled, set it on the rear part of the rail on the receiver of the rifle. Snug the screw so the sight clamps on the receiver but will still move forward and backward slightly.



9. Looking from the side, grasp the sight and slide it forward until it lightly touches the rear sloping area of the receiver.



10. While using a flat headed screw driver to tighten the cross screw, swing the rear of the sight left and right (perpendicular to the rail). Swinging the rear of the sight while tightening the cross screw will help "seat" the sight on the synthetic rail.



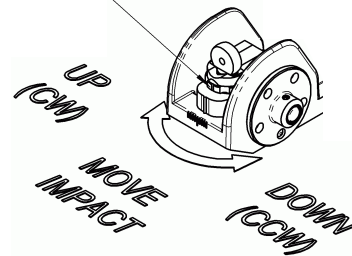
11. Tighten the screw until the sight will no longer move when you push on it or try to swing it.

12. When the loctite is set, the rear sight will be secure.

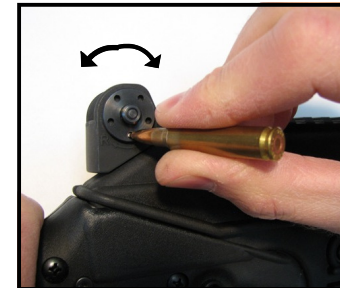
13. This completes the installation of the SU16A1 or SU16A1-EL sight.

### Elevation Adjustments for the SU16A1-EL Sights

ROTATE ELEVATION DIAL WITH BULLET TIP OR POINTED OBJECT TO MOVE BULLET IMPACT UP OR DOWN (APPROX. 1/4" PER DETENT AT 25 YDS - 7/8" AT 100 YDS).



### Windage Adjustments for the SU16A1 & SU16A1-EL Sights



MOVE BULLET IMPACT RIGHT (Rotate Clockwise)

MOVE BULLET IMPACT LEFT (Rotate Counter Clockwise)

Use bullet tip or pointed object to depress spring loaded detent and rotate windage. Use the existing front sight for elevation adjustment on the SU16A1 model.

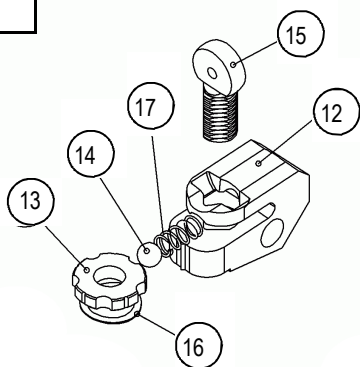
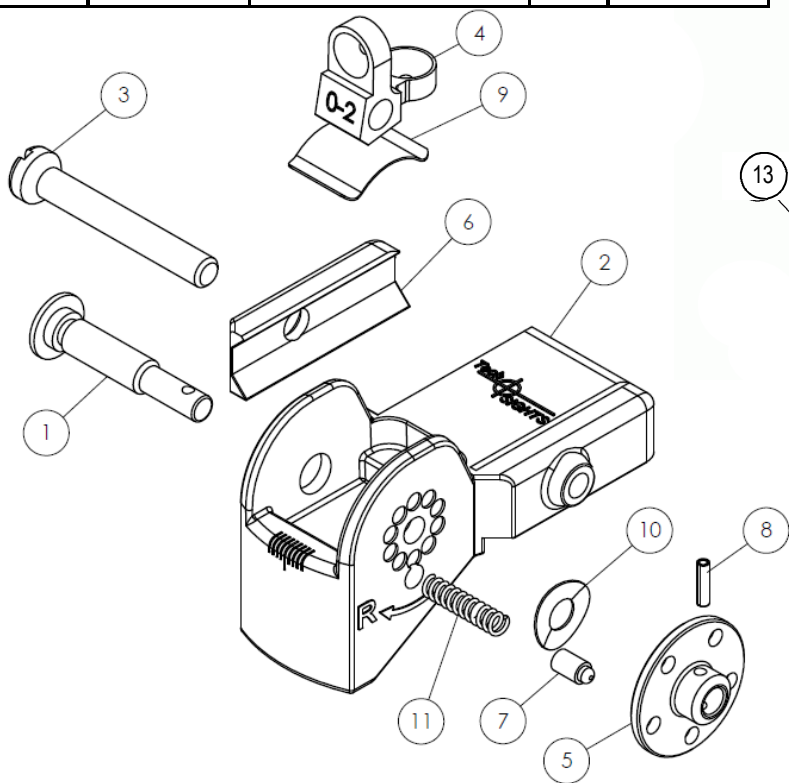
The SU16A1 sight uses a short range and long range dual flip aperture. The long range aperture is .036" taller than the short range aperture. Both have an aperture diameter of .062". This sight is compatible with most standard AR/M16 apertures.

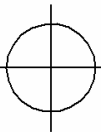
### PRODUCT GUARANTEE

The Tech-SIGHTS SU16A1 & SU16A1-EL sights have been designed to be a quality accessory for your firearm. If any part of the Tech-SIGHTS SU16A1 or SU16A1-EL should fail due to normal usage or manufacturing defect, we will replace the part(s) at no charge to the customer for a period of one year from the date of purchase.

Although we have made every effort to create a sight that will increase the accuracy of your firearm, we can make no guarantee as to the results each individual will experience using the sight.

ITEM NO	PART NUMBER	DESCRIPTION	QTY	PRICE EACH
1	TS00107	WINDAGE SCREW	1	\$3.00
2	TS00312	SIGHT BASE	1	\$35.00
3	TS00309	SCREW, 8-36	1	\$6.00
4	TS00109	REAR SIGHT APERTURE	1	\$8.00
5	TS00108	WINDAGE DRUM, A1	1	\$4.00
6	TS00313	CLAMP BLOCK	1	\$9.00
7	TS00002	REAR SIGHT DETENT	1	\$1.00
8	TS00017	ROLL PIN, 1/16 x 1/4"	1	\$.50
9	TS00106	APERTURE SPRING	1	\$1.50
10	TS00019	SPRING WASHER	1	\$2.50
11	TS00116	DETENT SPRING	1	\$1.50
12	TS00132	ELEVATION BASE	1	\$10.00
13	TS00133	DIAL	1	\$5.00
14	TS00136	BALL	1	\$.50
15	TS00134	APERTURE—.062 DIAMETER	1	\$8.00
16	TS00131	SPRING WASHER ELEVATION	1	\$2.00
17	TS00135	ELEVATION DETENT SPRING	1	\$1.00



**Tech** <sup>TM</sup>  **SIGHTS**

## ASSEMBLY INSTRUCTIONS for the SU16A1 & SU16A1-EL SIGHTS



**Tech**  **SIGHTS**

Tech-SIGHTS, LLC

Email: [sales@Tech-SIGHTS.com](mailto:sales@Tech-SIGHTS.com)  
[www.Tech-SIGHTS.com](http://www.Tech-SIGHTS.com)

Copyright 2013 Tech-SIGHTS, LLC

7-31-13 REV A

Receiver Mounted Aperture Sights  
for the  
Keltec SU16 Series,  
SU22, PLR 16 & PLR 22