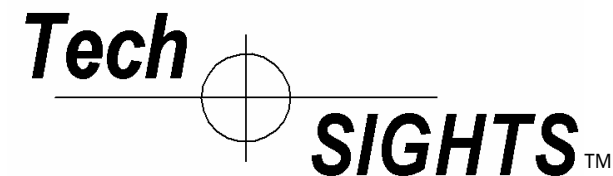
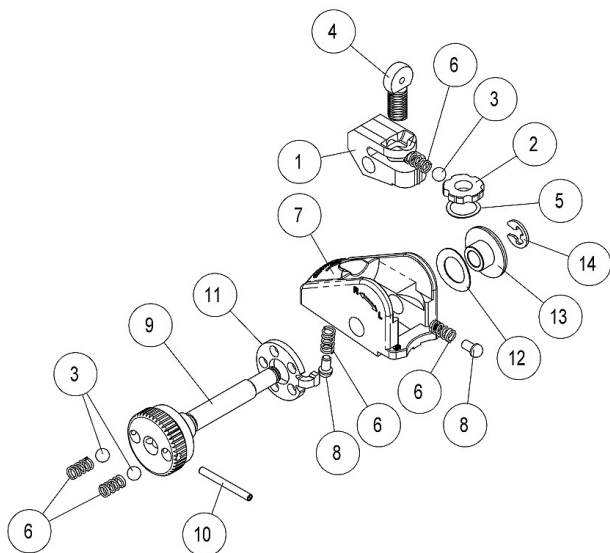


ITEM NO.	PART NUMBER	DESCRIPTION	QTY.	PRICE EA.
1	TS00132	ELEVATION BASE	1	\$10.00
2	TS00133	DIAL	1	\$ 5.00
3	TS00136	BALL, .125" DIAMETER CHROME	3	\$.50
4	TS00134	APERTURE - .062 DIA.	1	\$ 8.00
5	TS00131	SPRING WASHER, ELEVATION	1	\$ 2.00
6	TS00135	ELEVATION DETENT SPRING	5	\$ 1.00
7	TS00260	CARRIER	1	\$20.00
8	TS00265	PLUNGER	2	\$ 2.00
9	TS00258	WINDAGE SCREW	1	\$ 3.00
10	TS00262	ROLL PIN	1	\$.50
11	TS00245	INDEX WASHER	1	\$ 5.00
12	TS00267	WAVE WASHER	1	\$ 3.00
13	TS00263	BUSHING	1	\$ 5.00
14	TS00264	RETAINING RING	1	\$ 1.50



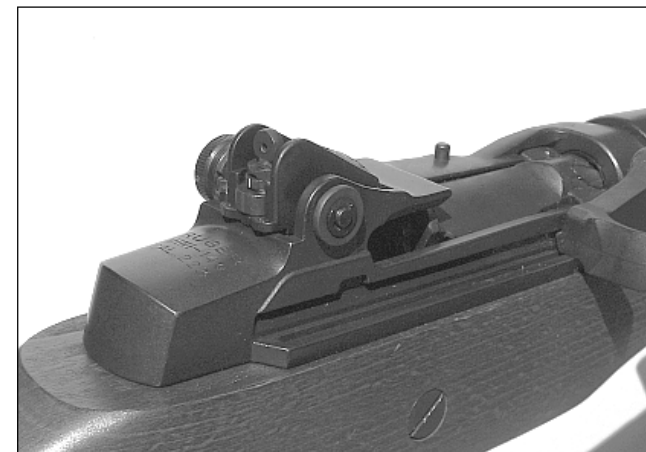
ASSEMBLY INSTRUCTIONS for the RR200 SIGHTS



PRODUCT GUARANTEE

The Tech-SIGHTS RR200 has been designed to be a quality accessory for your firearm. If any part of the RR200 should fail due to normal usage or manufacturing defect, we will replace the part(s) at no charge to the customer for a period of one year from the date of purchase.

Although we have made every effort to create a sight that will increase the accuracy of your firearm, we can make no guarantee as to the results each individual will experience using the sight.



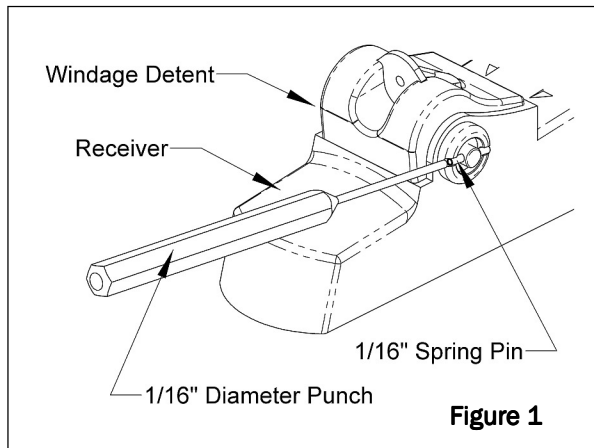
Phone: 843-332-8222
Email: sales@Tech-SIGHTS.com
www.Tech-SIGHTS.com

Receiver Mounted Aperture Sights
for the
Ruger® Pre-2005 Mini14
and
Mini30 Rifles

Tech SIGHTS™

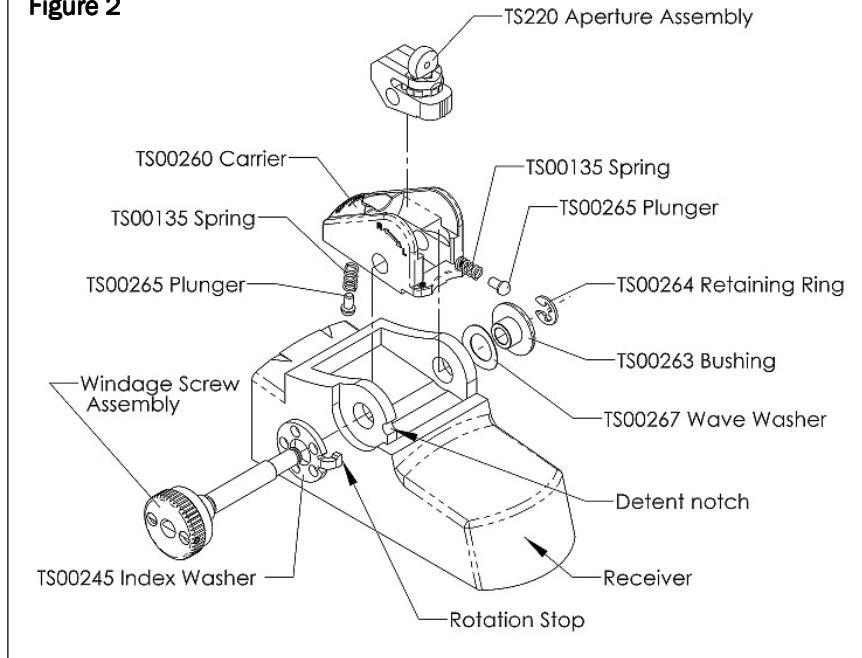
Assembly Instructions for the RR200 Sights

1. ALWAYS POINT MUZZLE IN A SAFE DIRECTION.
2. REMOVE THE MAGAZINE.
3. PULL THE BOLT TO THE REAR AND LOCK IN POSITION.
4. CHECK TO SEE THAT THERE ARE NO CARTRIDGES IN THE CHAMBER OR MAGAZINE.
5. Using a 1/16" punch tap the 1/16" Spring Pin out of the windage screw and hub as shown in Figure 1. Thread the windage out of the assembly. You may have to push in the Windage Detent on the left side of the receiver to remove the windage screw. This will allow the original sight parts to be removed. (See Figure 1)



6. Check the fit of the Windage Screw and the Index Washer, aligning the Rotation Stop in the Detent Notch. With the Index Washer held tight against the receiver the Windage Screw Assembly should rotate without binding. If the Windage Screw binds it may be necessary to file the Rotation Stop slightly to fit the Detent Notch. (See Figure 2)

Figure 2



7. Apply a small portion of grease or petroleum jelly to the Spring and Plunger and insert them into the carrier. This will keep the springs and detents in place while you assemble the parts. Move the TS220 Aperture Assembly into the Carrier and hold it in place keeping the detent and spring in place.

8. Lower the carrier with the TS220 Aperture Assembly down in between the ears on the receiver.

9. Slide the Index Washer onto the Windage Screw Assembly and insert it through the hole in the left side of the receiver and into the hole in the Carrier. Rotate the Windage Screw clockwise threading it through the TS220 Aperture Assembly. Continue rotating the Windage Screw until the end of the windage screw goes through the right hand side of the receiver.

10. Make sure that the Rotation Stop is aligned in the Detent notch in the receiver.

11. Slide the Wave Washer and Bushing on to the right end of the Windage Screw.

12. Push the Windage Screw in on the left side and push the bushing in on the right side to expose the groove cut on the right end of the Windage Screw. Slide the open side (like a fork) of the Retaining Ring from the side into the groove. Continue pushing the Retaining Ring until it snaps all the way into the groove. (See Figure 2)

Sight Adjustments for the RR200

