

Tech TM SIGHTS

Assembly Instructions for the MXT200 Sights

1. ALWAYS POINT MUZZLE IN A SAFE DIRECTION.

2. Pull the bolt to the rear.

3. CHECK TO SEE THAT THERE ARE NO CARTRIDGES IN THE CHAMBER OR MAGAZINE.

4. Remove the original front sight from the barrel.

5. Apply a small amount of low or medium strength thread locker to the hole in the barrel and to the threads on the 6-48 Screw (TS00143).

6. Install the Front Sight Tower and tighten the 6-48 screw to secure it to the barrel as shown in Figure 1.

7. Apply a small amount of low or medium strength thread locker to the two 6-48 Screws (TS00143) (Fig. 2)

8. Install the Adapter plate(TS00268) using the two 6-48 screws and tighten. (Fig. 2)

9. Place the MXT200 Rear Sight Assembly on the Adaptor plate (TS00268) .

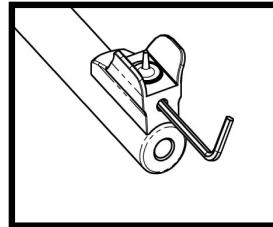
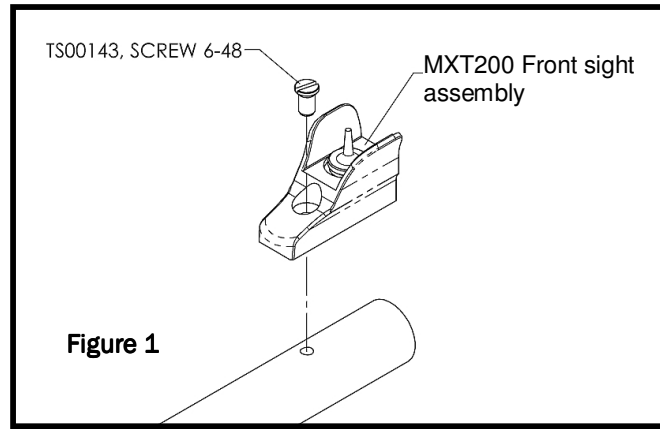
10. Apply a small amount of low or medium Loc tite to the threads on Lock Block Assembly (TS00238).

11. Thread the Nut (TS00239) on to the Lock Block Assembly (TS00238) as shown in Figure 2.

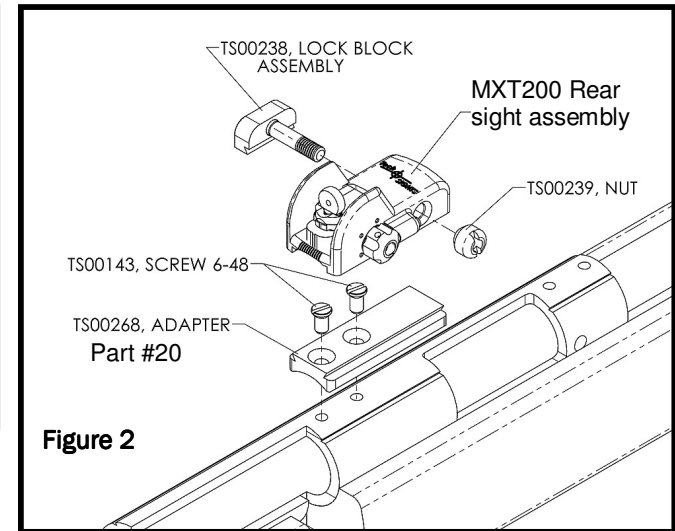
12. Slide the Rear Sight Assembly to the desired position and tighten the nut, securing the assembly to the adapter plate. (See Figure 2).

13. By sighting the rifle with the installed Tech-SIGHTS check the front sight to see if it is sitting straight up on the barrel. If the front sight is tipped to the right or left, slightly loosen the 6-48 screw and lightly push the front sight in the direction required to straighten the sight. Tighten the screw and then recheck the alignment. Repeat until the sight is properly aligned. After the thread locker is cured the position of the front sight assembly will be locked securely.

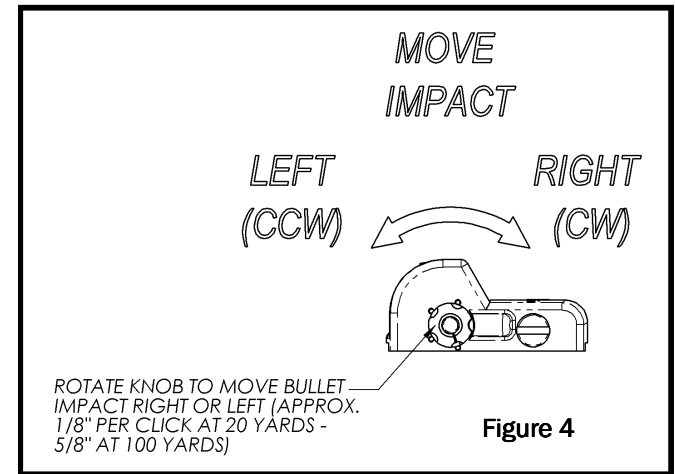
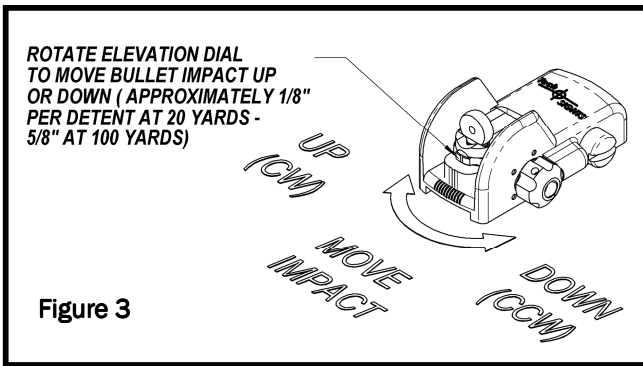
14. This completes the installation of the MXT200.



Check Screw for tightness



Sight Adjustments for the MXT200 Sights (Figures 3&4)

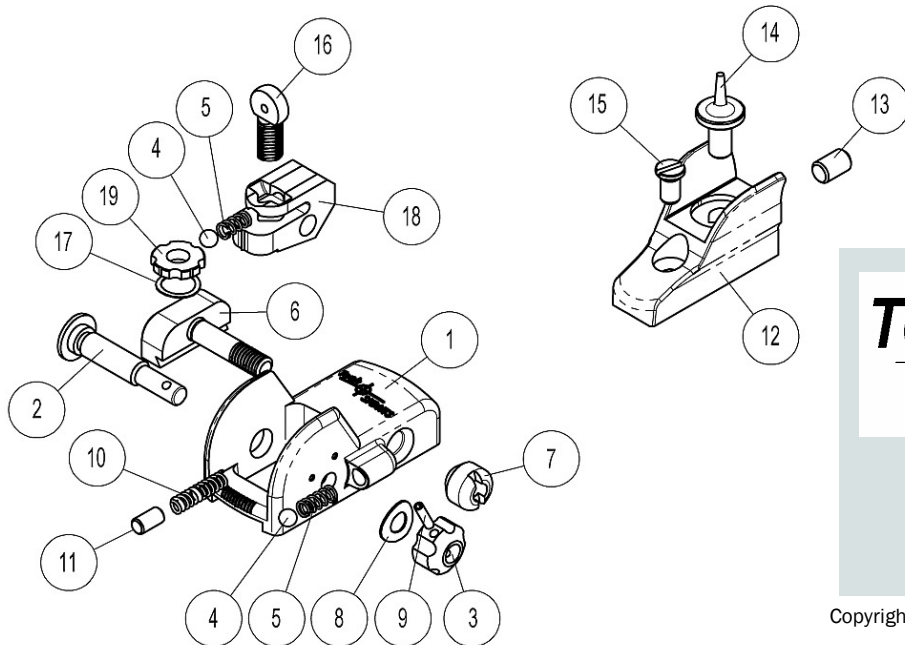


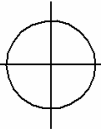
PRODUCT GUARANTEE

The Tech-SIGHTS MXT200 has been designed to be a quality accessory for your firearm. If any part of the MXT200 should fail due to normal usage or manufacturing defect, we will replace the part(s) at no charge to the customer for a period of one year from the date of purchase.

The MXT200 gives the shooter a quality extended sighting radius aperture sight. Although we have made every effort to create a sight that will increase the accuracy of your firearm, we can make no guarantee as to the results each individual will experience using the sight.

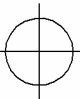
ITEM NO	PART NUMBER	DESCRIPTION	QTY	PRICE EACH
1	TS00173	SIGHT BASE	1	\$20.00
2	TS00107	WINDAGE SCREW, A2	1	\$3.00
3	TS00170	KNOB	1	\$8.00
4	TS00136	BALL, .125" DIA CHROME	2	\$1.00
5	TS00135	ELEVATION DETENT SPRING	2	\$1.00
6	TS00238	LOCK BLOCK ASSY	1	\$8.50
7	TS00239	NUT	1	\$5.00
8	TS00168	DISC SPRING	1	\$2.00
9	TS00017	ROLL PIN	1	\$0.50
10	TS00116	DETENT SPRING	1	\$1.50
11	TS00169	STABILIZER PLUNGER	1	\$1.50
12	TS00174	FRONT SIGHT BASE	1	\$10.00
13	TS00142	SOCKET SET SCREW 8-32 X .25"	1	\$0.75
14	TS00175	POST	1	\$5.00
15	TS00143	SCREW, 6-48	3	\$2.00
16	TS00134	APERTURE--.062 DIA	1	\$8.00
17	TS00131	SPRING WASHER, ELEVATION	1	\$2.00
18	TS00132	ELEVATION BASE	1	\$10.00
19	TS00133	DIAL	1	\$5.00
20	TS00268	ADAPTOR PLATE (See Figure 2)	1	\$11.00



Tech TM  **SIGHTS**

ASSEMBLY INSTRUCTIONS for the MXT200 SIGHTS



Tech TM  **SIGHTS**

Tech-SIGHTS, LLC

Email: sales@Tech-SIGHTS.com
www.Tech-SIGHTS.com

Copyright 2011 Tech-SIGHTS, LLC 86643 REV B

1-29-13

Receiver Mounted Aperture Sights
for the
Marlin 925/917/980/981/XT
and Other Rimfire Rifles